



**whatweknow**

ST GREGORY THE GREAT  
HIGH SCHOOL

1677 W. Bryn Mawr, Chicago, IL 60660  
773.907.2100  
[www.stgregory.org](http://www.stgregory.org)

**greyhound** guide



**Smaller  
classes  
lead to  
success**



**Personal  
attention  
makes  
all the  
difference**



**Everyone  
is  
welcome**



**Fun is  
essential  
to learning**



**Excellence  
is what  
we offer**

*With an average class size of 18 and an extensive support staff, students benefit from a 7 to 1 student teacher ratio.*



# inclusive

## ACADEMICS

*We are proud to offer a comprehensive, challenging, and college-preparatory academic program. Our classes are multi-leveled and adapted for varying abilities and learning styles. We know that all students can succeed.*

### **An Ideal Environment for Learning**

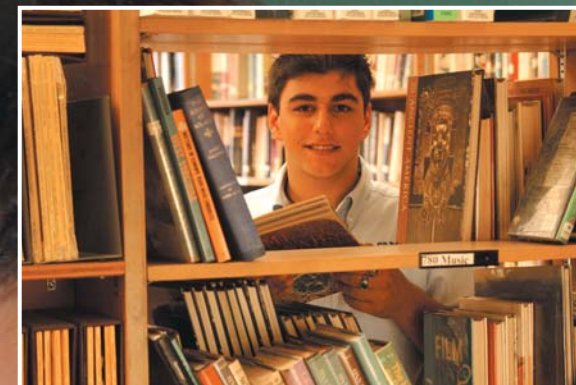
Master teachers at St. Gregory the Great have developed an articulated curriculum enabling students to achieve their full potential both inside and outside of the classroom. The curriculum is derived from current educational best-practice and is firmly rooted in Catholic values. All of our students have access to the latest technology through our Media Center and Mobile Laptop Labs.

Our dedicated faculty works with passion to inspire our students to reach their college and career goals. The well-resourced counseling department ensures that all students are supported and fully prepared for life at SGHS and beyond.

St. Gregory the Great offers a core curriculum and a wide-range of electives suited to the interests of students.

### **Course Offerings Include**

- Religion: from Morality to Prayer
- Language Arts: from Bestsellers to Journalism
- Fine Arts: from Music to Sculpture
- Foreign Language: from French to Spanish
- Social Studies: from World Studies to Current Events
- Science: from Biology to Physics
- Math: from Algebra to Calculus
- Business/Tech: from Microsoft to Career Planning
- Physical Education: from Health to Conditioning



St. Gregory the Great High School boasts of a 100% graduation rate.



# supportive LEARNING

*We give personal attention to all of our students to learn how we can help them reach their dreams. Through our unique support programs we ensure a bright academic future for our students. We know that a great school resembles a caring family.*

## **Learning Resource Program**

The Learning Resource Program (LRP) has been a hallmark of the St. Gregory the Great school community for over 25 years. LRP includes a class and academic services designed to support the core curriculum. A team of specialists provides students with supplementary academic instruction, organizational skills, and individualized tutoring.

LRP ensures that modifications are provided according to the student's Individualized Education Program (IEP), content coursework, and in accordance with federal and state laws. Modifications may include: test proctoring and lengthened time, personalized tutoring, alternate coursework or content, and audio-visual supplementary materials.

The Learning Resource Program impacts students by building self-esteem, fostering personal responsibility, and promoting educational independence leading to lifelong intellectual growth and success.

## **Protégé Program**

The Protégé Internship Program was created out of the desire to better prepare our students for life after graduation. It is designed to engage students in experiences outside of the classroom that will enrich their education and provide them with critical career insights. As a Protégé, students have the opportunity not only to learn about but also to participate in the resume, application, interview, hiring and employment processes.

Students in their junior year take the Career Planning course. After successful application, rising seniors meet with the program director to learn about internship placements. During the fall of senior year, Protégés interview with employers and secure their position. Each Protégé is committed to work up to 15 hours per week in place of afternoon elective courses. Protégés earn class credit and compensation toward tuition assistance or college savings.



100% of our student body participates in religious retreats and all students commit to perform 70 hours of community service.

# exploring SPIRITUALITY

*Living out a Christian call to love and serve is an everyday part of our school. Students participate in rich opportunities to deepen their faith and understand they are loved by God. We know that nourishing the mind, body, and soul leads to a complete young adult.*

## **Campus Ministry**

The campus ministry team is firmly committed to helping students grow in their awareness of God's presence in the world. To this end, the campus ministry team offers a variety of spiritual opportunities grounded in the Roman Catholic tradition.

As a means to celebrate and share our faith, Campus Ministry organizes prayer services, retreats, service-learning experiences, and regular celebration of the Eucharist.

All faith traditions call us to greater love and service of neighbor. As a Catholic school, we welcome students of all faith backgrounds who are committed to model the love of Christ.

## **Christian Service**

Students at St. Gregory the Great are instilled with deep compassion and constantly reach out in service to their neighbors. Each year students commit to actively serving the community through volunteer opportunities at church organizations and local agencies.

## **Retreat Experiences**

Beginning as freshmen, each class takes part in a special retreat designed to bring them together as a community and help them explore their own faith. Along with the campus ministry team, student leaders have the opportunity to guide reflections and facilitate prayer. An overnight retreat allows students to examine their spirituality, relationships, and identity.



Over 50% of our students participate in at least one athletic program and many are recognized at the city and state level.



# competitive

## ATHLETICS

*Greyhound athletes showcase their talents all year long in the gymnasium and on the ball field. Being active in sports instills in students a commitment to wellness and develops essential leadership skills. We know that preparation and teamwork are values that will lead to future success.*

### Athletic Programs

#### Fall Sports:

Cross Country, Football, Girl's Volleyball

#### Winter Sports:

Boy's & Girl's Basketball, Wrestling

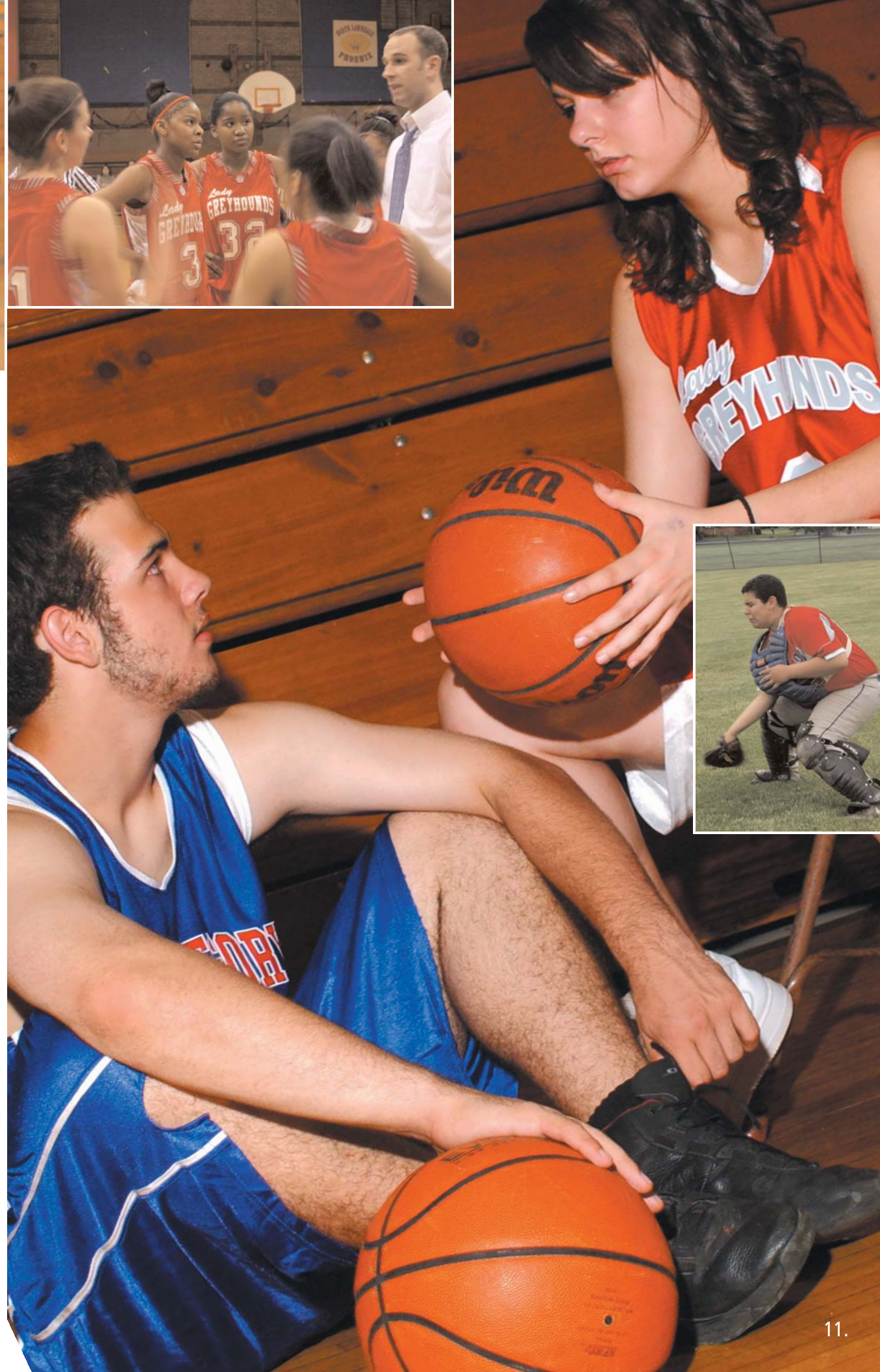
#### Spring Sports:

Softball, Baseball, Track & Field, Boy's Volleyball, Soccer

### Athletic Facilities

Our indoor sports programs are housed in the Monsignor Klasen Memorial Gymnasium. This facility is outfitted with a regulation-size basketball court and a Fitness Center dedicated to health and wellness instruction. Outdoor sports enjoy competition at athletic fields on the shores of Lake Michigan.

*In order to protect students' individual eligibility, schools of the Archdiocese of Chicago support the policies of the Illinois High School Association. In doing so, St. Gregory the Great High School may not promise or offer athletic scholarships of any kind. Violations may result in loss of eligibility for student, coach, and/or school.*



Start a new club, take photos for the yearbook, run for student body president—just go for it!



# experience

## ADVENTURE

Students at St. Gregory the Great impact the life of the school community on a daily basis. Through participation in extracurricular clubs and activities, students share their interests and develop their gifts. We know that involved students acquire the leadership skills to help them excel in the future.

### Clubs and Activities

- National Honor Society
- Student Government
- #1 Club
- Yearbook
- Performing Arts
- Anime Club
- H.O.U.N.D.S. Mentoring Program
- Ambassadors Club
- Chess Club
- Debate
- Peer Ministry

### H.O.U.N.D.S. Mentoring Program

A select group of upperclassmen ensures that all freshmen and transfer students are welcomed into the school community and feel supported throughout the year.

### Ambassadors Club

Student ambassadors are selected to share the spirit of St. Gregory with younger students preparing for high school. Ambassadors host shadows, visit middle schools, and assist with tours at Open House.

**Want to start a new club?** The small size of St. Gregory the Great allows for students to be the true leaders in the school community and start new clubs based on their interests.





Visit St. Gregory the Great to learn more about our high school.

**Attend Fall Open House (for students and families):**

Thursday, November 6, 6:00 – 8:00pm  
Sunday, December 7, 11:00 – 2:00pm

**Shadow Day at SGHS (for 7th and 8th Grade Students):**

1. Check your school calendar and identify a day off of school
2. Schedule a visit—contact Mr. Kyle Martin, Director of Admissions at (773) 907-2127 or [kmartin@stgregory.org](mailto:kmartin@stgregory.org)

**Take the Entrance Exam at SGHS (all 8th Grade Students):  
Saturday, January 10 at 8:00am**

Students should arrive with two #2 pencils and \$25 for the exam fee. On the day of the exam, packets of information will be distributed that include an application form and other necessary materials. Please contact the Admissions Office if you qualify for extended time. Please note: students taking the entrance exam at St. Gregory the Great will be given first priority for enrollment.



**Submit Financial Aid Application:**

Every student will receive a financial aid application on the day of the entrance exam. Families that submit their completed aid application by February 1, 2009 will receive notification of their tentative award prior to registration in early March.

**Receive Notification of Acceptance:**

Letters will be mailed home on February 13, 2009

**Incoming Freshmen Registration:**

Wednesday, March 4, 6:00-8:00pm  
Thursday, March 5, 6:00-8:00pm

Each evening, incoming freshmen and their families meet with faculty members to discuss freshman-year courses and student life at St. Gregory the Great.

**Transfer Students**

St. Gregory the Great does accept a limited number of transfer applications. All transfer applicants must have a formal interview with the admissions committee, following an examination of past academic and behavioral records.



**Tuition**

Tuition for the 2008-2009 school year is \$7,100. There is an additional fee for students enrolling in the Learning Resource Program.

**Tuition Assistance Program**

St. Gregory the Great offers a Tuition Assistance Program to ensure that an excellent Catholic education is accessible and affordable. There are various scholarships and grants available to all students. All awards are granted through an application process and determined on a case-by-case basis. Nearly 50% of the student population received tuition assistance in the 2007-2008 school year.

**Dates to Remember**

**March 15, 2009:** Final deadline for submitting financial aid application

**May 29, 2009:** Final award notification

**Frequently Asked Questions**

**How can I get to St. Gregory the Great?**

A: St. Gregory the Great is located in the Andersonville neighborhood of Chicago at 1677 W. Bryn Mawr, one block west of Ashland Ave. Public transportation to St. Gregory the Great is quick and easy from all over Chicago.

**When does the school day begin and end?**

A: The school day begins at 8:00am and ends at 3:10pm. School doors open at 7:30am.

**What is the dress code of St. Gregory the Great High School?**

A: Students wear long or short-sleeved, light blue oxford shirts—imprinted with the school name—with solid khaki-colored pants. Navy and gray SGHS sweatshirts can be worn seasonally. Solid black or brown shoes round out the uniform.

**I am not Catholic. Can I still attend St. Gregory the Great?**

A: While St. Gregory the Great focuses on making Catholicism an important part of its curriculum and school day, the school welcomes students of other faiths. Tolerance and religious appreciation are important concepts at SGHS. 60% of students who attend St. Greg's are Catholic, with the balance being made up of many Christian denominations, as well as Buddhist, Muslim, and Jewish students.

**How can I find out more information about St. Gregory the Great?**

A: For more information or to learn how to register a student, please contact Mr. Kyle Martin, the Director of Admissions, at (773) 907-2127 or [kmartin@stgregory.org](mailto:kmartin@stgregory.org). We are more than happy to answer any questions that you may have.

Visit us on our website:  
**[www.stgregory.org](http://www.stgregory.org)**

*You are in our thoughts and prayers. God bless!*